




- 额定电流最高达 200A
Rated currents up to 200A
- 高衰减性能滤波器
High attenuation filtering performance
- 可选医疗型 (M 型)
Optional medical versions (M type)
- 不同的出线连接方式
Different output connections
- 安规认证: 

特点 Features

- 高性能单相滤波器 紧凑、嵌入式/螺母/接线
High performance compact single phase filter with faston/nut/wire terminal
- 通用、小巧、方便安装
General purpose, compact, easy for installation and use

应用 Application

- 用于电子设备和电子测量仪器
Available for electronic equipments and measuring instruments
- 白色家电、单相工业设备、电源供应和控制系统
White goods, single phase industrial equipments, power supply systems and controls
- 用于开关电源, UPS 以及工业化自动设备
Single-phase power supplies, switch-mode power supplies, UPS and automotive equipments
- 医疗设备及医疗特别应用 (低泄漏电流)
Medical equipment and medical typical applications (Low current leakage)

技术参数 Technical Data

额定电压 Rated Voltage	125/250VAC
工作频率 Operation Frequency	50/60Hz
额定电流 Rated Current	1-200A
耐压测试 Hi-pot Test	1450VDC 2sec (线对线 Line to Line) 2250VDC 2sec (线对地 Line to Ground)
气候类别 Climate Category	25/85/21 (-25°C to +85°C)
设计参考标准 Design corresponding to	UL 1283, CSA 22.2 No. 8 1986, IEC/EN 60939

电路原理图 Electrical Schematic

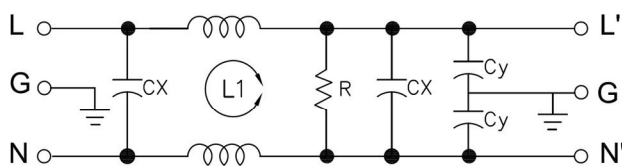


Fig 1

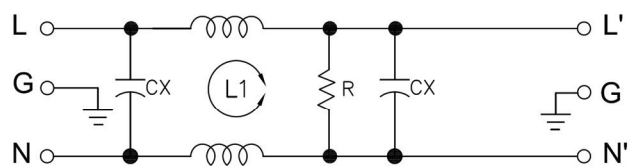


Fig 2

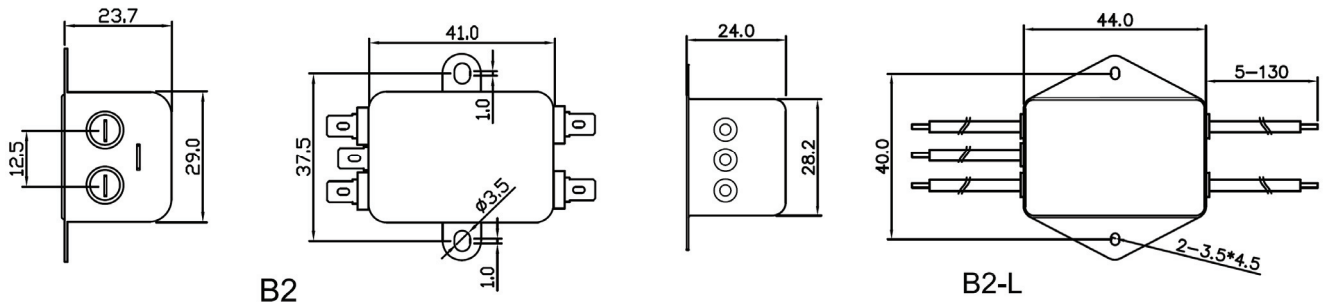
选型表 Type Selection Table

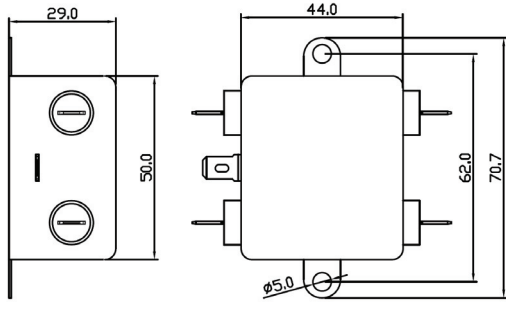
型号 Model	额定电流(A) Rated Current	泄漏电流(≤mA) Leakage Current	电路图 Circuit Diagram	外形尺寸 Dim. Fig.	出线端子方式 Output Connection		
							
DF201-1A-01	1	0.5	Fig 1		B2	B2-L	-
DF201-3A-01	3	0.5	Fig 1		B2	B2-L	-
DF201-6A-01	6	0.5	Fig 1		B2	B2-L	-
DF201-10A-01	10	0.5	Fig 1		D	B2-L	D-S
DF201-15A-01	15	0.5	Fig 1		D	-	D-S
DF201-20A-01	20	0.5	Fig 1		E	-	E-S
DF201-25A-01	25	0.5	Fig 1		-	-	E2-S
DF201-30A-01	30	0.5	Fig 1		-	-	H2
DF201-40A-01	40	0.5	Fig 1		-	-	H2
DF201-50A-01	50	0.5	Fig 1		-	-	H2
DF201-60A-01	60	0.5	Fig 1		-	-	H2
DF201-75A-01	75	0.5	Fig 1		-	-	N5
DF201-100A-01	100	0.5	Fig 1		-	-	N5
DF201-120A-01	120	0.5	Fig 1		-	-	N5
DF201-150A-01	150	0.5	Fig 1		-	-	N10
DF201-200A-01	200	0.5	Fig 1		-	-	N10
DF201-1A-01M	1	0.01	Fig 2		B2	B2-L	-
DF201-3A-01M	3	0.01	Fig 2		B2	B2-L	-
DF201-6A-01M	6	0.01	Fig 2		B2	B2-L	-
DF201-10A-01M	10	0.01	Fig 2		D	B2-L	D-S
DF201-15A-01M	15	0.01	Fig 2		D	-	D-S
DF201-20A-01M	20	0.01	Fig 2		E	-	E-S
DF201-25A-01M	25	0.01	Fig 1		-	-	E2-S
DF201-30A-01M	30	0.01	Fig 2		-	-	H2

Remark: Model name follow by: Blank represents Faston connection, L represents Wire connection, S represents Screw connection

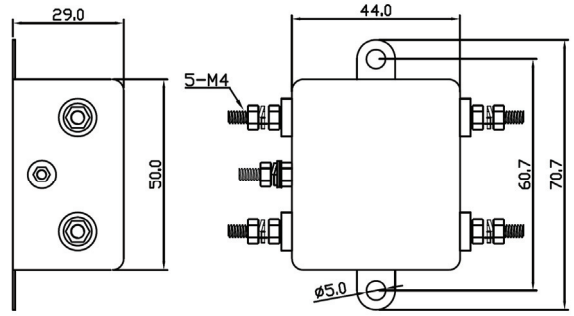
标准型号为快速插片端子，型号后加 L 为引线接线方式，型号后加 S 为螺丝接线方式 “-” 表示无此出线方式

外形尺寸 Outline Dimensions(mm)

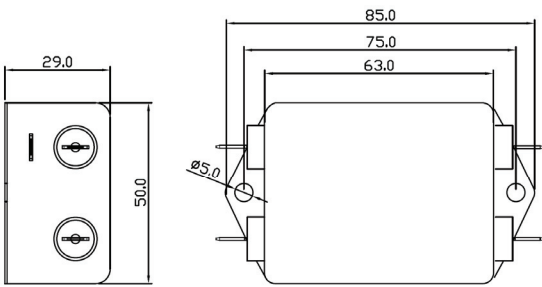




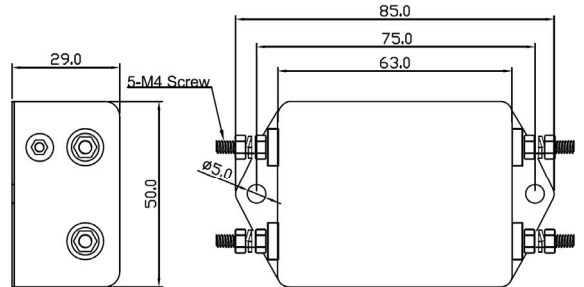
D



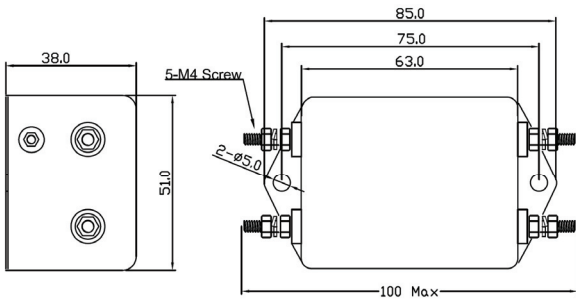
D-S



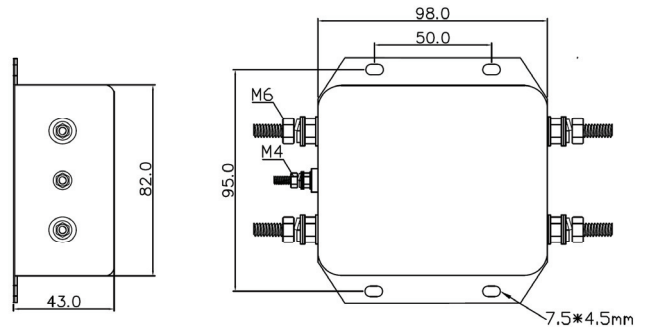
E



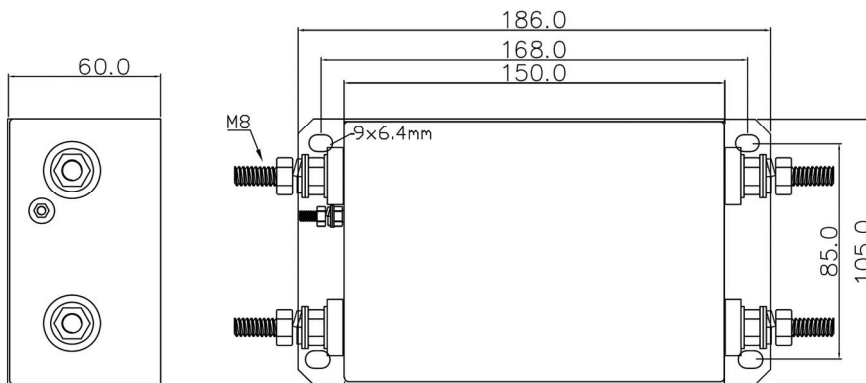
E-S



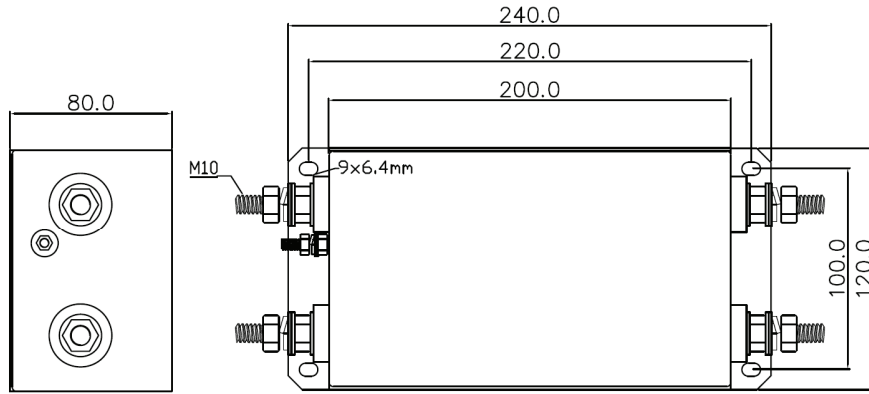
E2-S



H2



N5



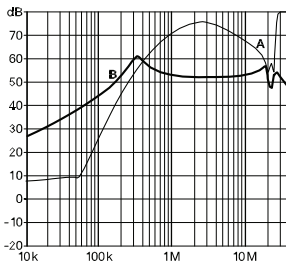
N10

插入损耗 Insertion Loss in dB

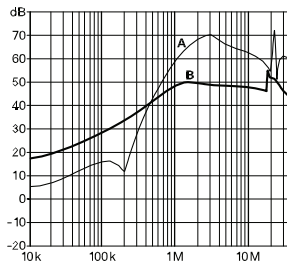
(50Ω/50Ω 环境下插入损耗 Insertion Loss in dB measured in a 50Ω/50Ω system, as IEC/CISPR No. 17)

A=Differential mode (差模) B=Common Mode(共模)

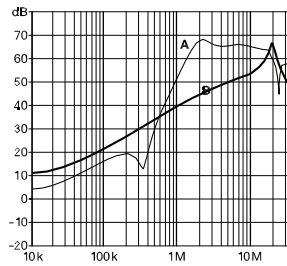
1 to 10 A types



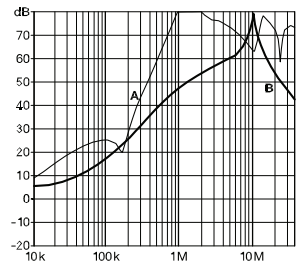
20 to 30A types



40 to 100A type



120A to 200A type



备注：以上规格为公司标准产品，可根据客户产品定制设计产品性能和尺寸外观。

Remark: Customized products are available according to special performance or dimensions requirements

更多产品请登陆官方网站：<http://www.dephir.com>

For more products please go to official website: <http://www.dephir.com>