




- 额定电流最高达 30A  
Rated currents up to 30A
- 良好低频衰减性能  
Good low frequency attenuation
- 可选医疗型 (M 型)  
Optional medical versions (M type)
- 不同的出线连接方式  
Different output connections
- 安规认证: 

### 特点 Features

- 双极滤波器含差模线圈，差模性能卓越  
Double stage filter with differential mode choke, outstanding differential mode performance
- 高性价比  
High performance to cost make

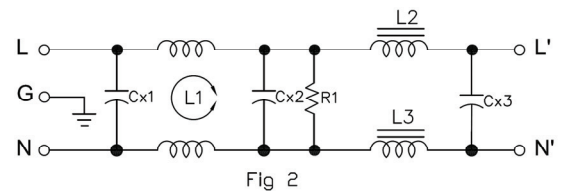
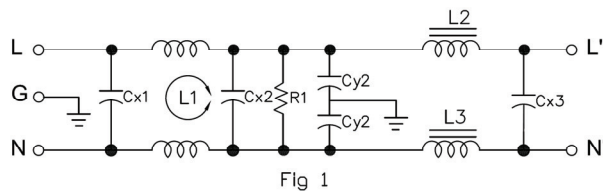
### 应用 Application

- 用于开关逆变类电源转换器  
For switching power supplies & converters
- 单相工业设备、控制系统  
Single phase industrial equipment and controls
- 高性能医疗设备 (低泄漏电流)  
High performance of Medical equipment (Low current leakage)

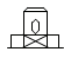


### 技术参数 Technical Data

额定电压 Rated Voltage	125/250VAC
工作频率 Operation Frequency	50/60Hz
额定电流 Rated Current	1-20A
耐压测试	1450VDC, 2 sec (线对线 Line to Line)
Hi-pot Test	2250VDC 2sec (线对地 Line to Ground)
气候类别 Climate Category	25/85/21 (-25°C to +85°C)
设计参考标准 Design corresponding to	UL 1283, CSA 22.2 No. 8 1986, IEC/EN 60939

### 电路原理图 Electrical Schematic

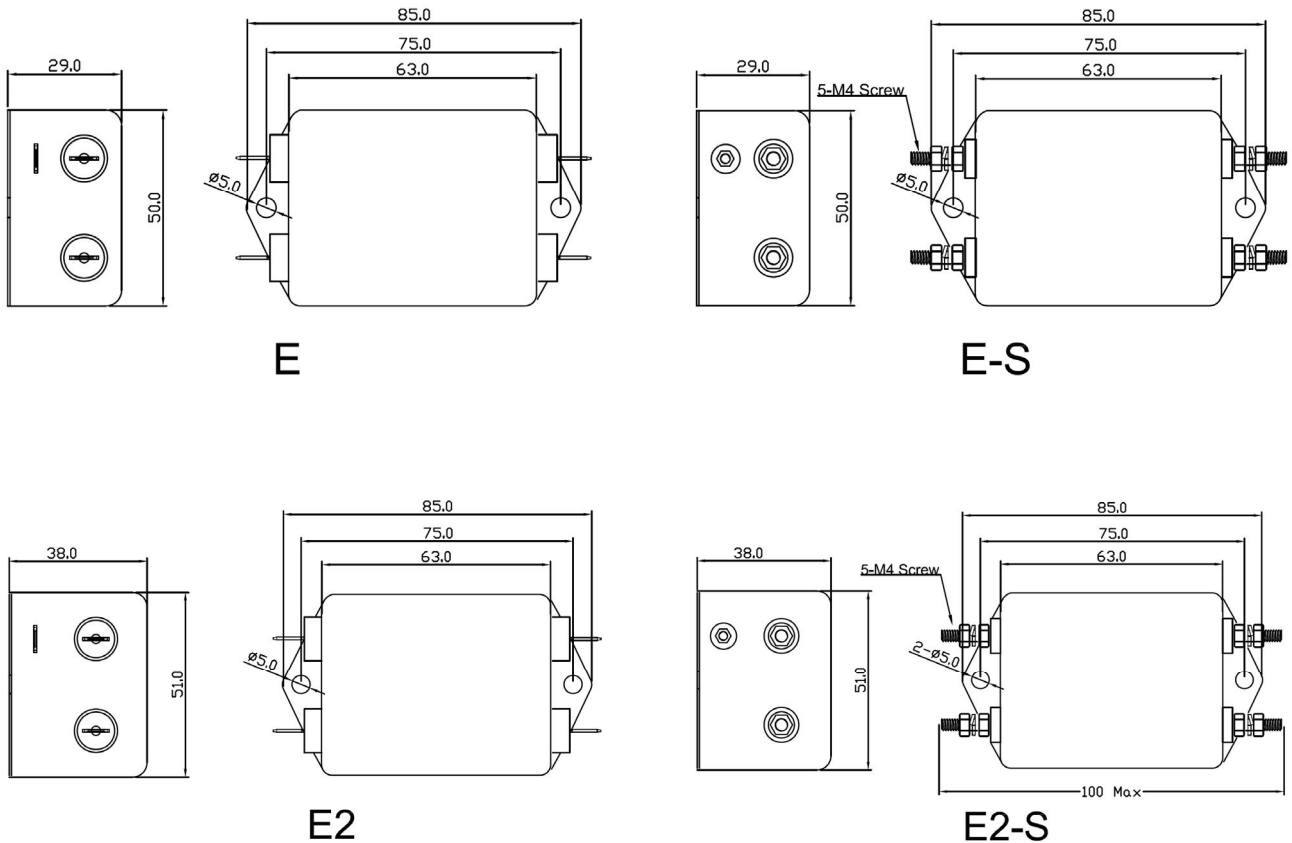


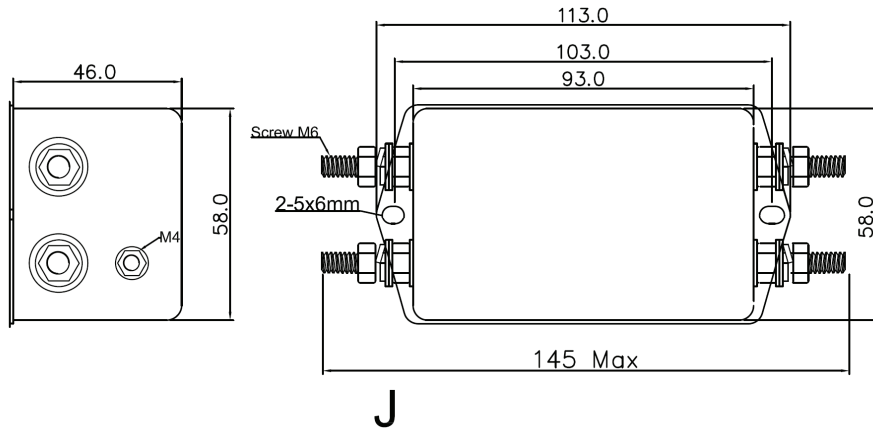
**选型表 Type Selection Table**

型号 Model	额定电流(A) Rated Current	泄漏电流(≤mA) Leakage Current	电路图 Circuit Diagram	外形尺寸 Dim. Fig.	出线端子方式 Output Connection		
							
DF203-1A-01	1	2.0	Fig 1		E	-	E-S
DF203-3A-01	3	2.0	Fig 1		E	-	E-S
DF203-6A-01	6	2.0	Fig 1		E2	-	E2-S
DF203-10A-01	10	2.0	Fig 1		E2	-	E2-S
DF203-15A-01	15	2.0	Fig 1		E2	-	E2-S
DF203-20A-01	20	2.0	Fig 1		-	-	J
DF203-30A-01	20	2.0	Fig 1		-	-	J
DF203-1A-01M	1	0.01	Fig 1		E	-	E-S
DF203-3A-01M	3	0.01	Fig 2		E	-	E-S
DF203-6A-01M	6	0.01	Fig 2		E2	-	E2-S
DF203-10A-01M	10	0.01	Fig 2		E2	-	E2-S
DF203-15A-01M	15	0.01	Fig 2		E2	-	E2-S
DF203-20A-01M	20	0.01	Fig 2		-	-	J
DF203-30A-01M	20	0.01	Fig 2		-	-	J

**Remark: Model name follow by: Blank represents Faston connection, L represents Wire connection, S represents Screw connection**  
 标准型号为快速插片端子, 型号后加 L 为引线接线方式, 型号后加 S 为螺丝接线方式 “-” 表示无此出线方式

**外形尺寸 Outline Dimensions(mm)**

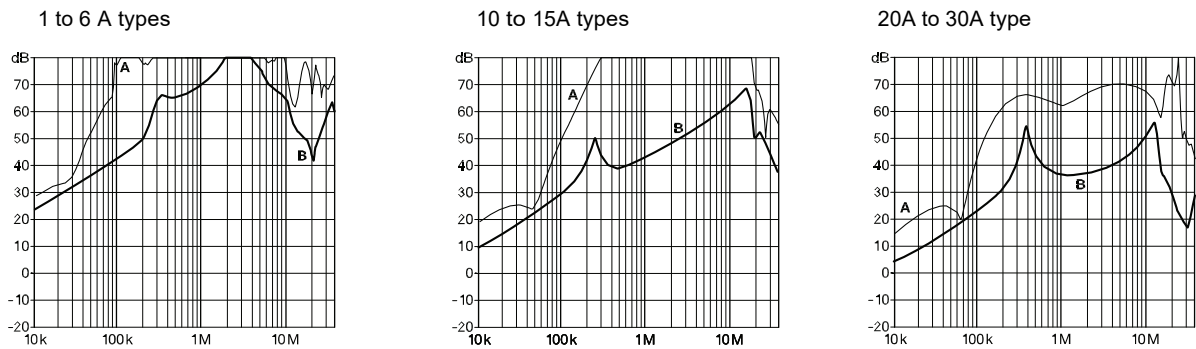




### 插入损耗 Insertion Loss in dB

(50Ω/50Ω 环境下插入损耗 Insertion Loss in dB measured in a 50Ω/50Ω system, as IEC/CISPR No. 17 )

A=Differential mode (差模) B=Common Mode(共模)



备注：以上规格为公司标准产品，可根据客户产品定制设计产品性能和尺寸外观。

Remark: Customized products are available according to special performance or dimensions requirements

更多产品请登陆官方网站：<http://www.dephir.com>

For more products please go to official website: <http://www.dephir.com>